



A Message From Your President

Jessica Emrick Davies | President

The July meeting had a Human Resources focus and was so informational! Our speaker was interactive and entertaining! Cecily is founder of Shift Happens, LLC a consulting firm focused on Organizational Development, Human Resources, Career-Coaching, Facilitation and Team Building. She was fantastic and if you attended the meeting and would like to give a testimonial,

please email those to cecily@shifthappensllc.com. Cecily would greatly appreciate it!

Our August chapter meeting is focused on celebrating and sharing our story of the accomplishments that you, our EWI Wichita chapter members, have made happen this year. I am so proud to be involved with the quality of member firms and representatives that we have in our chapter. Our 49th annual Executive & Scholarship Night will be held at the Wichita Marriott. Formal invitations have been mailed to all executives. Make sure to personally invite your executive. Our executives, like our representatives, support Executive Women International for various reasons. This evening gives us a chance to showcase all aspects of EWI and let them know that their investment is producing results. We will have the honor of awarding and celebrating our three 2019 scholarship winners. We are very proud of these ladies and we look forward to sharing their inspiring stories with our membership.

Supporting our Nonprofit Members: A reminder that this quarter we are offering a chance for our EWI members to assist one of our own nonprofit members with needs that they have at that time. If you wish to assist the HealthCore Clinic with needs for their school backpack initiative please feel free to bring items listed below to the August meeting or take them directly to Davna at HealthCore Clinic located at 2707 E. 21st St North. We will have a special table at the August meeting designated for collecting these school supplies. All contributions are greatly appreciated and will assist in lightening the load for this critical community organization. Their goal this year is to fill 300 backpacks. They will hand them out in August to children of families that utilize their services. The following are needed items:
Spiral Notebooks (Wide and College Rule) Pocket Folders
Pens, Pencils, Erasers Glue Sticks, Crayons Markers

Thank you in advance for all you do to support our members and member firms!

2018-2019 Officers & Directors

President

Jessica Emrick Davies
Wichita Marriott

Vice President

Pam Dinwiddie
Textron Aviation

Secretary

Jennifer Drace
John A. Marshall

Treasurer

Tracy Lucas
High Touch Technologies

Fundraising

Kristina Keeter
Western Associates, Inc.

Membership

Jan Baggett, Wichita Chamber of Commerce
Theresa Hogan, Stoutheart Financial Group

Director-at-Large

Jeanetta Bolin
Commerce Bank

Sergeant-at-Arms

Denise Wickham
Berry Companies, Inc

Programs

Communications Director

Davna Gould
HealthCore Clinic

Advisor

Theresa Hogan
Tracy Lucas

Committee Updates



Kristina Helm | Fundraising

Our Tillies 12 Months of Flowers Fundraiser was a HUGE success. Special thank you to everyone who donated to this fundraiser. We sold 27 cards and made \$324.00 off of the Fundraiser for our chapter. If we choose to do this again next year we know that we can more than double that amount by helping to sell to employees within our firms and by spreading the word together.

Our Colvin Food Drive will be here before we know it. In an effort to help with the food drive this year we will be accepting gift cards ahead of time to collect to shop for the boxes of food. If your company would like to donate a gift card please get them to Kristina or Jessica between now and November. We hope this added time will help us collect more to go towards this AMAZING cause.

Kristina Helm
Director- Fundraising



Jeanetta Bolin | Director-at-Large

EWI Wichita is looking forward to honoring our 2019 scholarship recipients at Executive Night. Each recipient received \$2,000. We have two ASIST recipients: Tiffany Sheppard is attending WSU Tech for a nursing degree to receive her LPN; Irma Finch is attending Butler Community College for a Business Administration degree. Our EWISP recipient is: Ismari Martinez graduated from Wichita North High School and will be attending Kansas University (KU) for a degree in Biology.

Jeanetta Bolin
Director-At-Large



Pam Dinwiddie | Vice President

It's August which means fall is right around the corner! I can't wait!!!

Jeanetta Bolin, Kathy Armbruster, Teresa Arthur, Kristina Helm and I attended the Convoy for Hope on Saturday, July 20 at Bethel Life Center. We were given options on where we wanted to help and we chose the Children's Shoes tent.

It was so rewarding to greet each family, to talk to them about their excitement to get new shoes, backpacks, haircuts, etc. It was such a hot day but there were so many smiles that you really didn't even notice. Next year we would like to increase our EWI volunteers for this worthwhile cause.

LCAM is next month and that means I'm getting closer to becoming our chapter's president. While I'm a little nervous, I know that I have each and every one of you to help our chapter to be the best it can be.

Together we will be rock stars!!!
Pam Dinwiddie
Vice-President



ASHLEY SCHOPF

Replacement Representative

Ashley is a Project Manager for John A. Marshall Co. She was born and raised in Wichita and attended Newman University on a golf scholarship. She has over 15 years' industry experience. Her project administration practices began in the residential market and has culminated at John A. Marshall Co. for the past 11 years. Ashley is replacing EWI representative Sherrie Balmer. Welcome Ashley!



ANNIE LIFE

New Representative

Welcome Annie Life! Annie is the Senior Vice President, Community Relations & Charitable Foundation for Wichita Baseball 2020. Life began her baseball career with the Pawtucket Red Sox, International League Triple-A affiliate of the Boston Red Sox in 1979, and more recently joined the CBI-LP baseball group serving in several capacities including the Port Charlotte Stone Crabs and Spring Training operations at Port Charlotte Sports Park in Florida, and the Pacific Coast League New Orleans Triple-A franchise's nationally recognized rebranding of Zephyrs to Baby Cakes. She was instrumental in the launch of the Caribbean Educational & Baseball Foundation. Annie has traveled to Cuba, Jamaica and Puerto Rico, assisting in youth clinics while delivering baseball equipment to youth in the Caribbean basin.

Prior to returning to baseball, she enjoyed a distinguished 25-year career in the healthcare industry. Life developed and managed the Occupational Health Department at the local hospital in Northeastern PA servicing over 300 local and national companies. After relocating to Nevada she developed and managed a nationwide independent phlebotomy network for a Las Vegas based concierge medical clinic providing services to over 15,000 patients.

She studied at Penn State University and earned her RN degree from Valencia College. A Certified SCUBA Divemaster, Annie has volunteered her time with youth programs, clinics, and day care facilities in both the US and Honduras, and is an active participant in fundraising for ALS.

Chapter Events – Executive Night

Join us at the **Wichita Marriott**
For **Executive Women International**
Executive & Scholarship Night

Date: Wednesday, August 14, 2019

Time: 5:30pm Cocktails, Dinner & Program

Location: 9100 Corporate Hills Drive



Wednesday, September 18 – Saturday, September 21, 2019

CONFERENCE FACT SHEET**Conference Registration**

Log in to ewiconnect.com to access conference registration.

\$650 – February 15 to June 14, 2019 – Early Registration

\$750 – June 15 to September 13, 2019 – Regular Registration

\$195 – Leadership Caucus

Host Hotel – The Pfister Hotel

Our hotel reservation link is located on our conference information website – www.ewiconnect.com/lcam2019. Chapters are encouraged to only book the amount of rooms needed at the time that they register for conference. To ensure that all EWI members are able to reserve a room within our room block, we will be monitoring conference registrations and hotel reservations to make sure that paying conference attendees are able to reserve a room at the hotel. If we have questions, we will be contacting members for clarification. Our host hotel is larger than the hotels we've had the past two years and there are a number of suites available for chapters based on hotel availability at time of booking.

Book by August 16, 2019 at our special rate of \$179 per night.

2019-2020**INSTALLATION
OF OFFICERS****Wednesday, September 11th, 2019****5:30 pm Social****6:00 pm Dinner & Installation of Chapter Officers and
Directors****Ya Ya's Eurobistro
8115 E. 21st Street North****Pam Dinwiddie
Textron Aviation
Incoming President**

2019 Reading Rally

SAVE THE DATE!! The afternoon of Thursday, October 24th, is the designated date for the EWI Annual 3rd Grade Reading Rally at Colvin Elementary. Dr. Carol Ysidro, a local (Derby) Dentist by day and a children's author in her spare time, has graciously accepted our offer to be the Featured Author for this year's event. The committee has been contacting member firms requesting donations of food and/or items for the event, so we appreciate everyone's generosity! We will also be looking for representatives to help us with any of the following activities:

- Food Service – Help set up, serve and clean up
- Student t-shirt distribution
- Set up writing books, crayons, pencils for the student activity
- Help students write a story
- Distribute school supplies
- Clean up after Reading Rally

Further details will be provided as we get closer to the date, but everyone is welcome to join us! Please contact Tammy Voth (316.517.7097 or tvoth@txtav.com) if you are interested in volunteering at this event or for more information.

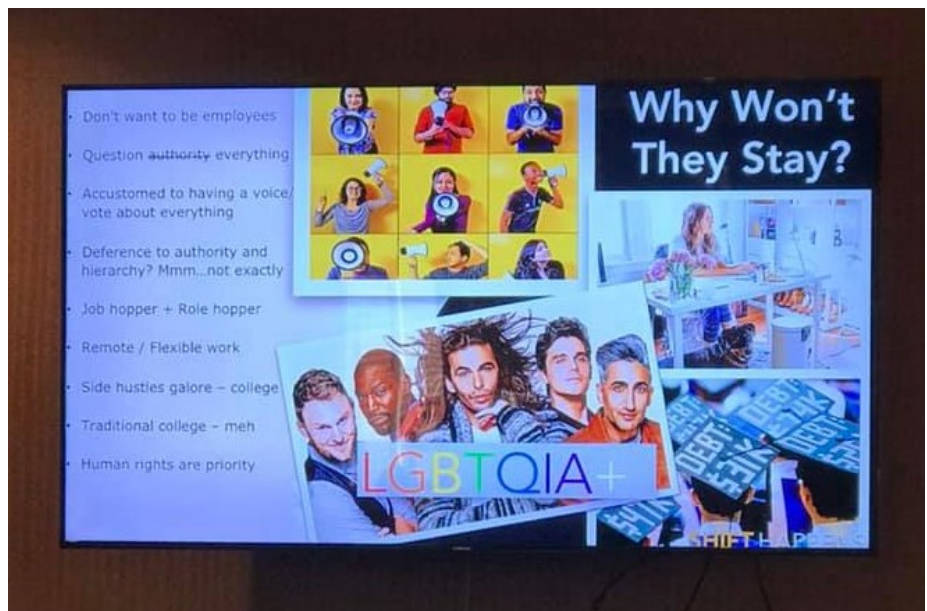


Chapter Events

July Chapter Meeting “Shift Happens”



Thank you to Cecily Rodriguez, Founder of Shift Happens, LLC. She provided an informative and entertaining human resources presentation.



Chapter Events

Convoy of Hope

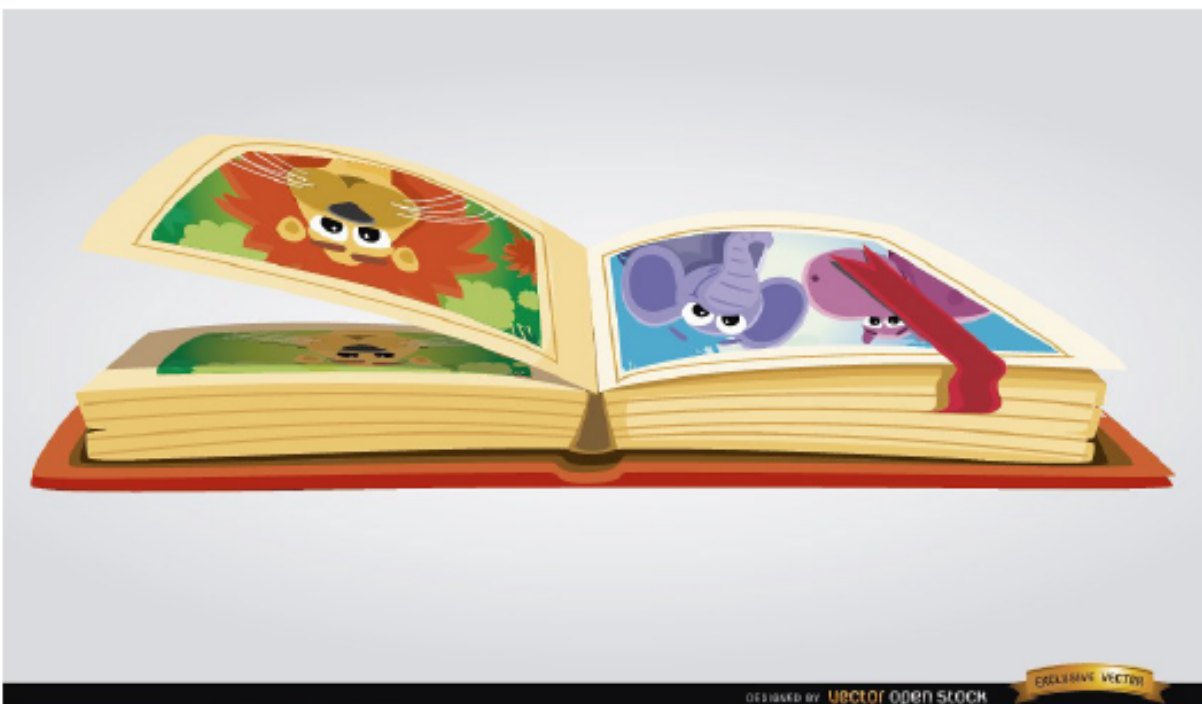
Jeanetta Bolin, Kathy Armbruster, Teresa Arthur, Kristina Helm and Pam Dinwiddie attended the Convoy for Hope on Saturday, July 20 at Bethel Life Center.





2019 Reading Rally-LCAM

- Wednesday, September 18, 2019
- Will include Leadership Caucus attendees and anyone who would like to come.
- Planning to visit Next Door in Milwaukee - <https://www.nextdoormke.org/about-us/>
- Will hold a chapter-wide book drive.
- Children are 2 months – 5 years old.
- Needs: Multi-cultural books – Level 1 – picture books and board books.
****See wish list flyer for amazon link on next page.****
- Wish List: Backpacks for smaller children, toothbrushes and small tubes of toothpaste for their home-based advocates to distribute. Library rugs with number or letters on them – prefer 9' oval.
- Community Library on 29th Street is free to the community and any books for readers higher than level 1 are donated to this library. Every Thursday family members can come to the library and get books for free.
- Planning a local author to read to the children and local mascot to distribute bookmarks.
- Planning an activity for the children to do.
- We will have a large banner for all to sign.



This year's LCAM Reading Rally is in Milwaukee and will be hosted on September 18th and books are needed. The event will benefit Next Door and their literacy programs. All Leadership Caucus attendees will attend the LCAM Reading Rally that morning.

If you are interested in donating a book, I am happy to take it.

They have provided an Amazon link to use.

Multi-cultural books – Level 1 – picture books and board books.

Wish list link:

[https://www.amazon.com/hz/wishlist/ls/1NZTM6Q6SG23D?
ref =wl share](https://www.amazon.com/hz/wishlist/ls/1NZTM6Q6SG23D?ref=wl_share)





Happy Birthday to YOU!!!

August 8 ~ Candace Parry, Chapter Life Member

August 23 ~ Denise Wickham, Berry Companies



We post the chapter meeting minutes on our EWI Wichita website at <https://ewiwichita.org/>

ABOUT EWI

Established in 1938, EWI is a non-profit organization with more than 1,900 member firms and 2,200 representatives in major cities throughout the United States and Canada.

EWI brings members together to promote member firms, to enhance personal and professional development, and to encourage community involvement.

As a premier organization for networking and leadership development for today's business professionals, EWI offers professional development through its Academy of Leadership, scholarships, online learning, and philanthropic initiatives with a focus on literacy.

EWI also provides over 600 board positions to women on the corporate and chapter level annually. For more information, visit ewiconnect.com.

Corporate Connections

Board of Directors

Our board members lead and guide our organization and represent Chapters from across the country. Below is our 2018-2019 Board.



CORPORATE PRESIDENT

RONWYN ANDERSON

Individual Member
EWI of Nashville
ronwyn@aol.com



PRESIDENT-ELECT

FELICIA SENTER

Tulsa Tech
EWI of Tulsa
felicia.senter@tulsatech.edu



SECRETARY / TREASURER

CHERYL HOLMES

CASTO
EWI of Columbus
cholmes@castoinfo.com



DIRECTOR

CHRISTINE HEALY

The Printer Inc.
EWI of Des Moines
chealy1142@gmail.com



DIRECTOR

NELDA TATUM

UNC Charlotte - Business Affairs
EWI of Charlotte
natatum@unc.edu



DIRECTOR

KRISTI EMMONS JONES

FedEx Services
EWI of Memphis
kemmons@fedex.com



ADVISOR

CHERYL HAWKINS

American Clinical Laboratory Association
EWI of Washington DC
chawk@acla.com



CONNECTIONS | CAREERS | COMMUNITY

JOIN THE CONVERSATION!



facebook.com/ewicorp



@ewicorporate



@ewicorporate



pinterest.com/ewicorporate



CORPORATE OFFICE

CORTNEY IHDE

Executive Assistant to the EWI Corporate Board of Directors
Corporate Office Manager
cortney@ewiconnect.com



CONNECTIONS | CAREERS | COMMUNITY

Wichita Chapter Social Media



@facebook.com/ewiofwichita



@ewiwichita

Like us on Facebook and Follow us on Twitter. Share events, photos, accomplishments and more with EWI Wichita Membership in one convenient location! Email social media submissions to Pam Dinwiddie at the email listed below.

For questions please contact Pam Dinwiddie:
Pdinwiddie@txtav.com

Share your news & photos in the
monthly *Connect*

Contact: Davna Gould
dgould@healthcoreclinic.org

September Issue ~ 9-2-19

Upcoming Chapter Meetings

Third Wednesday of each month
unless otherwise noted

August 14, 2019

5:30 PM

Executive & Scholarship Night

Wichita Marriott

9100 Corporate Hills Drive

September 11, 2019

5:30 p.m. – 7:30 p.m.

**Annual Meeting &
Installation of Officers**

Ya Ya's Euro Bistro

October 16, 2019

5:30 p.m. – 7:30 p.m.

Chapter Meeting

WSU Ulrich Museum

Chapter Board Meetings

Second Wednesday of
each month

~All members are welcome~

Contact Jessica Emrick

jessica.Emrick@wichitamariott.com