

A Message From Your President



Jessica Emrick Davies | President

We will celebrate the first day of Spring this month. What a wonderful time of year to see the beauty that new growth brings to our world. I want to challenge us as a chapter to think about the growth of our chapter. With growth brings a renewed vibrancy in life. New members not only result in sustainability of our organization, they also open new opportunities for each of our member firms.

We have a strong chapter which collectively has significant impact on many lives in our community. We are making a difference and we need to proudly tell that story. We change lives through our involvement in Colvin Elementary, our scholarship programs, our philanthropic initiatives for our nonprofit members, leadership opportunities within our chapter, and educational offerings at LCAM. If each of us makes a renewed effort to bring just one person to a meeting we help spread the EWI story and we will be sharing in the responsibility of making EWI and our Wichita chapter a better organization. The strength of our EWI chapter is dependent on you!

LCAM Registration is now open! Some details are still being finalized for this year's event, but I would encourage you to register early and reserve your hotel accommodations in Milwaukee Wisconsin on September 18th - 21st. If you haven't been to LCAM, I can't think of a better way to grow professionally and personally. I walk away with amazing contacts and new leadership skills. See the enclosed flyer in this issue. Early Bird Registration – ends June 14 - \$650 registration. Volunteer and sponsorship opportunities are also available, if you are interested.

March give us an opportunity to celebrate each other during the **EWI Fireside Events**. Hostesses are working on getting their invitations sent out. I hope each of you walk away with a better understanding of what your hosting EWI Sister's profession entails. Learn what the host and her firm offer to the community and our membership and you may walk away with a new personal connection! A special **Thank you** to the Hostesses for volunteering, without them we couldn't direct the funds to Fundraising which allows us to award the Scholarships!

2018-2019 Officers & Directors

President

Jessica Emrick Davies
Wichita Marriott

Vice President

Pam Dinwiddie
Textron Aviation

Secretary

Jennifer Drace
John A. Marshall

Treasurer

Tracy Lucas
High Touch Technologies

Fundraising

Kristina Keeter
Western Associates, Inc.

Membership

Jan Baggett, Wichita Chamber of Commerce
Theresa Hogan, Stoutheart Financial Group

Director-at-Large

Jeanetta Bolin
Commerce Bank

Sergeant-at-Arms

Denise Wickham
Berry Companies, Inc

Programs

Heather Egan
Visit Wichita

Communications Director

Davna Gould
HealthCore Clinic

Advisor

Theresa Hogan
Tracy Lucas

Committee Updates



Tracy Lucas | Treasurer

The financial position of EWI of Wichita is:

Chapter Operating Account:

01/31/19 Opening Balance: \$21,035.31

02/28/19 Reconciled Bank Balance: \$21,767.95

Deposits:

1. \$3,025.00 – Membership dues
2. \$775.00 – Membership dues

Expenses:

1. \$107.36 – Commerce Bank (Chapter Insurance)
2. \$95.00 – High Touch Technologies (web hosting and maintenance)
3. \$385.00 – Sedgwick County Zoo (representative paid membership dues twice)

Chapter BCDP Account:

01/31/19 Opening Balance \$6,873.19

02/28/19 Reconciled Bank Balance \$4873.19

Deposits

1. No Deposits made

Expenses

1. \$1000.00 – University of Kansas (2nd payment Julie Gronwald)
- \$1000.00 – Wichita State University (2nd payment Truc Nguyen)

MeriTrust Savings Account

02/28/19 Balance \$24,232.40

TCK Endowment Account

02/28/19 Balance \$61,989.48

Respectfully submitted,
Tracy Lucas
Treasurer 2017-2019



Heather Egan | Programs

I hope everyone enjoyed Lori Richardson's presentation last month with Stoutheart. We should all be off to a healthy start, both mentally and now financially!

This month we look forward to Fireside Lunches, a great opportunity to get to know some of our fellow members better. A big thank you to everyone who is hosting.

In April, we will reconvene at Twelve in West Wichita for a wonderful program presented by Portia Portugal on the Dress for Success program. If you have any purses that are gently used that you would like to donate to this program, be sure to bring them that evening. You have a couple of months to go through your purse inventory before-hand!



Jeanetta Bolin | Director-at-Large

The ASIST & EWISP Scholarship process has begun and contacts on the distribution lists have been notified of the online process for applications. To date, there has been one ASIST application submission and no EWISP application submissions. Submissions for applications will close on March 22. Our judges will begin reviewing and scoring the applications the first part of April.



Committee Updates

Kristina Helm | Fundraising

Spa Night- Fundraising Night

Tuesday May 21st at 6:30 pm

Beautydot Medical & Day Spa & Aspen Grey (located inside Genesis Health Clubs)

This will be a FUN evening of food, drinks, bidding on spa packages, learning all things Spa and Health and Wellness, and touring one of Wichita's stop spas and medical facilities. Dr. Hellman w/ Aspen Grey will be our featured speaker this evening.

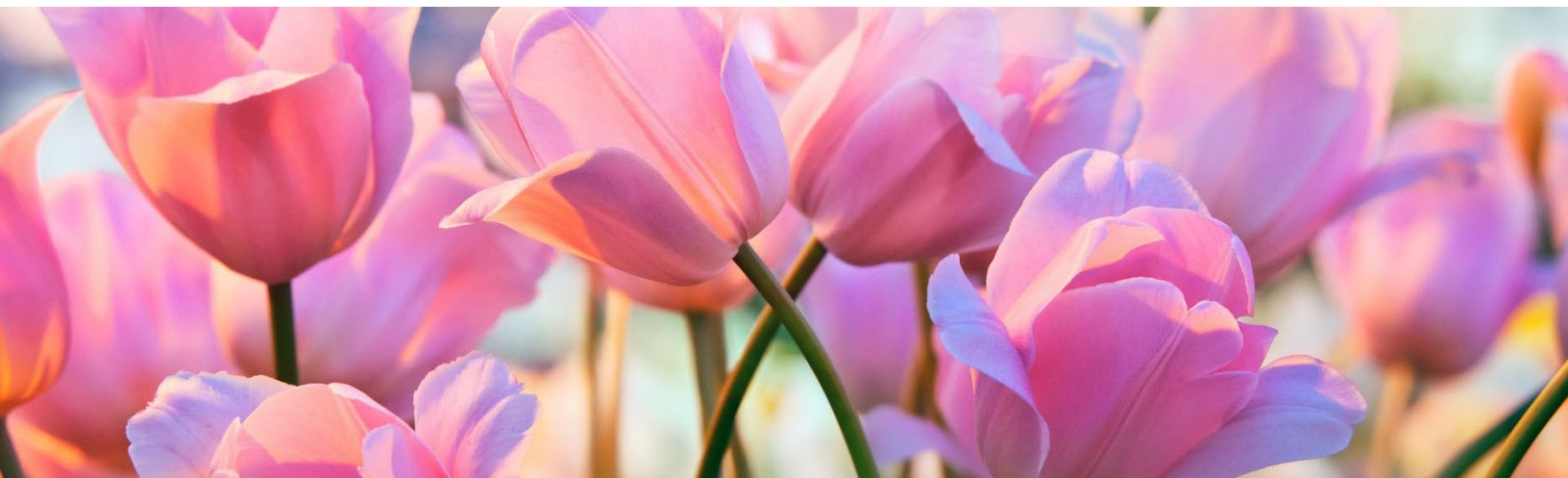
We will have a wine pull on the night of the event, so please consider donating a bottle of wine personally or from your firm to raise the most funds for our scholarship program! More information will follow. . If your business would be willing to donate a bottle of wine please email Kristina Helm at kristina@westernassociates.com. There will also be tickets available for purchase for the chance to win spa baskets at the event.

Fundraising for next meeting:

We have decided to do the Tillie's 12 Months of Flowers Fundraiser: I will have cards available at the next meeting and will help go over all details at that meeting. This is a great way for us to fund-raise extra money for our chapter.

HOW IT WORKS

The **"12 Months of Flowers"** card allows each cardholder to present their card in one of our two locations in exchange for a wrapped bouquet of fresh, seasonal flowers! Each wrap is a \$6.25 value and is available any day of each month. Each card carries a value of \$75 but is sold for only \$30! \$12, or 40%, of each card sold goes directly to the fundraising group. The card will expire one year from the first month of redemption, NOT from the card purchase date.





Wednesday, September 18 – Saturday, September 21, 2019

CONFERENCE FACT SHEET

Conference Registration

Log in to ewiconnect.com to access conference registration.

\$650 – February 15 to June 14, 2019 – Early Registration

\$750 – June 15 to September 13, 2019 – Regular Registration

\$195 – Leadership Caucus

Host Hotel – The Pfister Hotel

Our hotel reservation link is located on our conference information website – www.ewiconnect.com/lcam2019. Chapters are encouraged to only book the amount of rooms needed at the time that they register for conference. To ensure that all EWI members are able to reserve a room within our room block, we will be monitoring conference registrations and hotel reservations to make sure that paying conference attendees are able to reserve a room at the hotel. If we have questions, we will be contacting members for clarification. Our host hotel is larger than the hotels we've had the past two years and there are a number of suites available for chapters based on hotel availability at time of booking.

Book by August 16, 2019 at our special rate of \$179 per night.

Transportation to/from Milwaukee Mitchell International Airport

The Pfister Hotel is located 5 miles North of Milwaukee (MKE). Taxi service, Shuttle Service(for hire), Uber and Lyft provide transportation to and from the airport. Fares ranges between \$10 - \$25 each way.

Conference Attire

Conference attire is Business Casual Attire. We encourage all attendees to be comfortable while representing their firms and chapters professionally. We will not be having any formal events so there is no need to bring along formal gowns or cocktail attire.

Saturday morning's Annual Meeting attire – Business Professional

Chapter Photographs

We will be offering professional headshots and chapter photo sessions throughout the conference. Incoming Presidents will have an opportunity to take a headshot during Leadership Caucus on Wednesday, September 19. More information to follow.

Leadership Caucus

This year's Leadership Caucus is a half-day of EWI basics, history, operations and important information for all Chapters. We invite all INCOMING President's and Presidents Elect to join us on Wednesday, September 18, 2019. All Leadership Caucus registrants will attend our Corporate Reading Rally in the morning. Those attending should plan to travel to Milwaukee on Tuesday, September 17, 2019.

Chapter PIN/Sticker Exchange & Sash Contest

We highly encourage chapters to bring a chapter/city pin or sticker with them to this year's conference to use when you interact and connect with other conference attendees. Traditionally, we've had a pin/sticker exchange at our opening reception and attendees continue to use them as the conference gets underway when meeting others. This year, we encourage all members to connect and network with as many EWI members as they can throughout the conference, beginning when you arrive. Please feel free to be creative and select something that represents your chapter and your hometown in the best possible way! We will also have a contest for the best chapter sash. More details forthcoming!

Academy of Leadership – Two Modules! Alumni Experience is Back!

On Thursday, September 19:

Option 1: Lori Giovannoni will present “**Lessons in Leadership – How to Motivate, Influence and Lead People to Action**”

Option 2: Kristi Emmons Jones will present “**Emotional Intelligence**”

Option 3: Alumni Experience – Exclusively for Academy of Leadership (AOL) Alumni, more details to come.

Keynote Speakers

Karen McCullough

www.karenmccullough.com

Change is Good... You Go First

The pace of change is accelerating and is more complex. Change is occurring more frequently, and can become overwhelming. Today we all need new tools and rituals to help us not only survive, but thrive in this world of technology, innovation, and disruption. In her keynote program, Change is Good, Karen empowers you with three critical steps to lead and inspire change. She will debunk several myths around motivating change while sharing the missing links to growing a culture of change and modifying behavior.

Whether your natural instinct is to embrace change or to run from it, this program is for you! You will leave with the tools to develop a “change mindset”. This will enable you to access new ways of communication, develop new skills, and make a shift in thinking. It's time to get excited about change. Are you ready see the opportunities change presents?

Jeffrey Butler

www.jeffjbutler.com

21st Century Leadership - How to Cultivate Leadership in Today's Workplace

Whether you a Baby Boomer, Millennial or Generation Xer, the same rule applies, leaders speak with their actions, not with their words. So, it's imperative that leaders understand how to stimulate action in adverse circumstances. Jeff dives deep into how the psychology of leadership works, debunking the biggest myths that are often preached about leadership. Mostly important, Jeff shows how anyone can develop leadership traits to create life-changing adjustments to get extraordinary results, whether that may mean getting a better following, group leadership, or inspiring others around you. For maximum impact, Jeff provides real-world, actionable tips to help attendees take immediate steps to apply his advice and his as leaders in their own careers.

Learning Points

- Project the right leadership image in person and online
- Discover the truth behind common leadership traits such as courage and purpose
- Avoid common mistakes of personal leadership and career advancement.

Reading Rally

Our Reading Rally will be held the morning of Wednesday, September 18th. Incoming Chapter Presidents and Presidents Elect attending Leadership Caucus will be attending the Reading Rally. More information on our school will be forthcoming. We encourage all chapters to collect books and bring them to LCAM.

Thursday Evening – Think Beach Boys, Hawaiian Food, Coconuts and Palm Trees

We encourage all attendees to pack their favorite beach apparel and plan to enjoy a night filled with party fun and food! More information on this event is forthcoming.

**Questions??? – Any questions can be directed to the EWI Corporate Office
at 262-269-5625 or Cortney@ewiconnect.com**

EWI's Leadership Conference & Annual Meeting (LCAM)

1. Check out the LCAM Group photos from the past several years on pages 7-11.
2. Share your LCAM memories in next month's issue by submitting your photo, with year and location of the event to:
dgould@healthcoreclinic.org
3. Start making your travel arrangements for EWI's 2019 LCAM in Milwaukee, WI!



Leadership Conference & Annual Meeting – LCAM Memories



2018 LCAM Raleigh, NC

Davna Gould, HealthCore Clinic; Jessica Emrick, Wichita Marriott; Pam Dinwiddie, Textron Aviation; Gina Hess, Kansas Health Foundation



2017 LCAM Grapevine, TX

Dawn Truman, JP Weigand; Jessica Emrick, Wichita Marriott; Gina Hess, Kansas Health Foundation; Tami Barker, Hyatt Regency; Theresa Hogan, Stoutheart Financial; Davna Gould, HealthCore Clinic; Karen Smith, Westar Energy, Teresa Arthur, Commerce Bank



2016 LCAM Spokane, WA

Helen Nicoli, SJCF Architecture; Tracy Lucas, High Touch Technologies; Dawn Truman, JP Weigand; Davna Gould, HealthCore Clinic; Tami Barker, Hyatt Regency



2015 LCAM Tulsa, OK

Nancy Umholtz, Delta Dental; Candace Parry, Kansas Health Foundation; Tami Barker, Hyatt Regency; De Nelson, City of Wichita; Karen Smith, Westar; Davna Gould, HealthCore Clinic; Dawn Truman, JP Weigand



2014 LCAM Washington, DC

Davna Gould, HealthCore Clinic ; Debbie Pfingsten, Meritrust; Angela Telford, Sedgwick County Zoo; Candace Parry, Kansas Health Foundation; Tracy Lucas, High Touch Technologies; Jenny Stephens, Star Lumber & Supply; Kim Weprin, Associated Integrated Marketing; Pat Campbell, WSU Foundation



2013 LCAM Dallas, TX

Kim Weprin, Associated Integrated Marketing; De Nelson, City of Wichita; Pat Campbell, WSU Foundation; Jenny Stephens, Star Lumber & Supply; Angela Telford, Sedgwick County Zoo; Denise Wickham, Berry Companies; Debbie Pfingsten, Meritrust



2012 LCAM

Theresa Hogan, Stoutheart Financial; Angela Telford, Sedgwick County Zoo; Helen Nicoli, SJCF Architecture; Risa Carter, IFG; Pat Campbell, WSU Foundation; Pam Fullinwider, WSU Foundation.



2011 LCAM Minneapolis, MN

Sharon Phillips, Metro Courier; Dawn Truman, JP Weigand; Jan Bagget, Wichita Regional Chamber of Commerce; Candace Parry, Kansas Health Foundation; Helen Nicoli, SJCF Architecture; Carolyn Sayer, Carolyn Sayer's Fine Jewelry; Connie Velghe, Westar Energy; Theresa Hogan, Stoutheart Financial



2006 LCAM Orlando, Florida

Joan Rapp, Specialists Group; Connie Velghe, Westar Energy; Marcie Ray, Wichita Children's Home

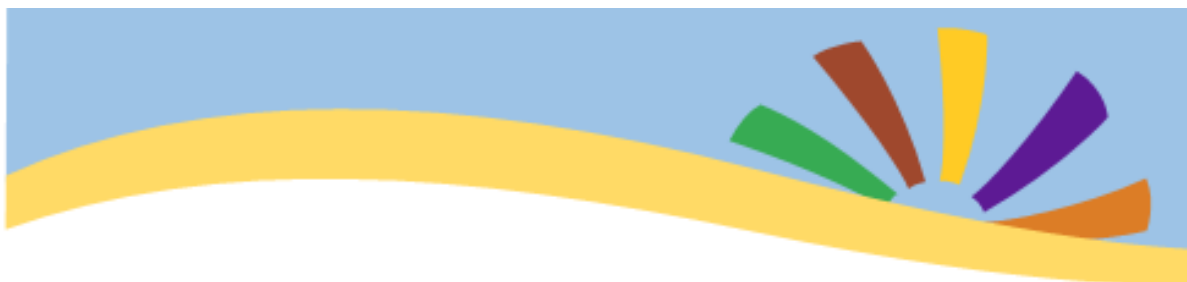
Theresa Hogan, Stoutheart Financial; Marcia Miller, Spirit AeroSystems

Chapter Events

February Chapter Meeting



Chapter Events



April EWI Meeting

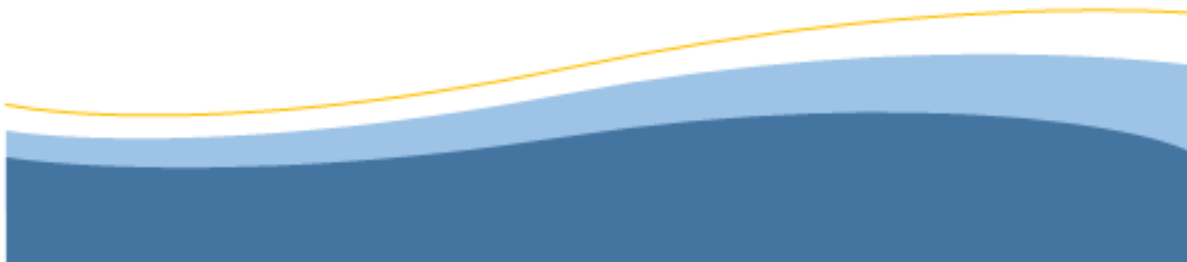
The Wichita Chapter of EWI welcomes Portia Portugal, Executive Director, Dress for Success Wichita *

Wednesday, April 17th, 2019, 5:30 p.m. to 7:30 p.m.

Twelve Restaurant and Bar

12111 W. Maple Street, Suite 121

Donations accepted of New or Gently Used Purses on the night of the event.



Chapter Events



Firm Night **Sedgwick County Zoo** 5555 Zoo Boulevard

June 19, 2019
5:30 – 7:30 p.m.

Program: Plans are underway to enjoy an evening in The Reed Family Elephants of the Zambezi River Exhibit. Dr. Jeff Ettling, Executive Director/CEO, looks forward to presenting information about the Zoo's Masterplan Phase 1 projects, including the new Visitor Entry Center. Please plan to attend a safari adventure in June with your spouse/guest and your Executive and their spouse/guest.





Happy Birthday to YOU!!!

Charlene Dreiling, Chapter Life Member – March 11

Jennifer Drace, John A. Marshall Co – March 13

Sharon Thomas, Life Member – March 18

Debbie Pfingsten, Meritrust Credit Union – March 21

Jan Bagget, Wichita Chamber of Commerce – March 25

Pat Campbell, Life Member – March 28



We post the chapter meeting minutes on our EWI Wichita website at <https://ewiwichita.org/>

ABOUT EWI

Established in 1938, EWI is a non-profit organization with more than 1,900 member firms and 2,200 representatives in major cities throughout the United States and Canada.

EWI brings members together to promote member firms, to enhance personal and professional development, and to encourage community involvement.

As a premier organization for networking and leadership development for today's business professionals, EWI offers professional development through its Academy of Leadership, scholarships, online learning, and philanthropic initiatives with a focus on literacy.

EWI also provides over 600 board positions to women on the corporate and chapter level annually. For more information, visit ewiconnect.com.

Corporate Connections

Board of Directors

Our board members lead and guide our organization and represent Chapters from across the country. Below is our 2018-2019 Board.



CORPORATE PRESIDENT

RONWYN ANDERSON

Individual Member
EWI of Nashville
ronwyn@aol.com



PRESIDENT-ELECT

FELICIA SENTER

Tulsa Tech
EWI of Tulsa
felicia.senter@tulsatech.edu



SECRETARY / TREASURER

CHERYL HOLMES

CASTO
EWI of Columbus
cholmes@castoinfo.com



DIRECTOR

CHRISTINE HEALY

The Printer Inc.
EWI of Des Moines
chealy1142@gmail.com



DIRECTOR

NELDA TATUM

UNC Charlotte - Business Affairs
EWI of Charlotte
natatum@unc.edu



DIRECTOR

KRISTI EMMONS JONES

FedEx Services
EWI of Memphis
kemmons@fedex.com



ADVISOR

CHERYL HAWKINS

American Clinical Laboratory Association
EWI of Washington DC
chawk@acla.com



CONNECTIONS | CAREERS | COMMUNITY

JOIN THE CONVERSATION!



facebook.com/ewicorp



@ewicorporate



@ewicorporate



pinterest.com/ewicorporate



CORPORATE OFFICE

CORTNEY IHDE

Executive Assistant to the EWI Corporate Board of Directors
Corporate Office Manager
cortney@ewiconnect.com



CONNECTIONS | CAREERS | COMMUNITY

Wichita Chapter Social Media

[@facebook.com/ewiofwichita](https://facebook.com/ewiofwichita)[@ewiwichita](https://twitter.com/ewiwichita)

Like us on Facebook and Follow us on Twitter. Share events, photos, accomplishments and more with EWI Wichita Membership in one convenient location! Email social media submissions to Pam Dinwiddie at the email listed below.

For questions please contact Pam Dinwiddie:
Pdinwiddie@txtav.com

Share your news & photos in the
monthly *Connect*

Contact: Davna Gould
dgould@healthcoreclinic.org

Submission deadline:
April Issue ~ 4-5-19

Upcoming Chapter Meetings

Third Wednesday of each month
unless otherwise noted

March EWI Meeting Fireside Luncheons

More info to be announced

Wednesday, April 17

April EWI Meeting

Twelve Restaurant and Bar

12111 W. Maple Street, Suite 121

Dress for Success

Tuesday, May 21

(Note, this meeting is on Tuesday)

May EWI Meeting

Beautydot Medical & Day Spa

1447 N Rock Rd- Inside Genesis

Fundraiser- Spa Night

Chapter Board Meetings

Second Wednesday of
each month

~All members are welcome~

Contact Jessica Emrick

jessica.Emrick@wichitamariott.com